



DEGERtraker

300EL

1600EL

date 02/07

Maximum solar yield...

can be achieved with the DEGERtraker tracking system. By using the DEGERtraker tracking system, you are truly acknowledging the signs of our times: not only are you protecting our environment and nature but you are increasing your yield and thus achieving amortisation sooner.

Maintenance-free. Long-lived. Recyclable.

The systems designed to these exacting parameters are mass-produced in an ISO 9001-certified factory under environmentally sound conditions. DEGERtraker systems are truly 100% recyclable. Compared with rigid systems, the amount of electronic scrap after useful life is 40% lower!

Quick installation.

Pre-assembled components and detailed instructions allow installation within less than two hours (after the mast has been erected).

A technology to rely on.

The fact that the patent-protected control system and the utility model-protected mechanical system were awarded the inventor's prize of the federal state of Baden-Württemberg in 2000 and have since been further developed. This shows that the DEGERtraker meets the demands of both experts and investors. The proven static design of the DEGERtraker is based on DIN 1055-4 (8.86) and DIN 1056 (10.84) for installation up to 8m (wind load zone I).

**Tracking system
for free-standing
applications, on
buildings and for
fitting on different
mast heights**



Added yield 35-45%

**Only possible with the
patented system control
DEGERconecter.**

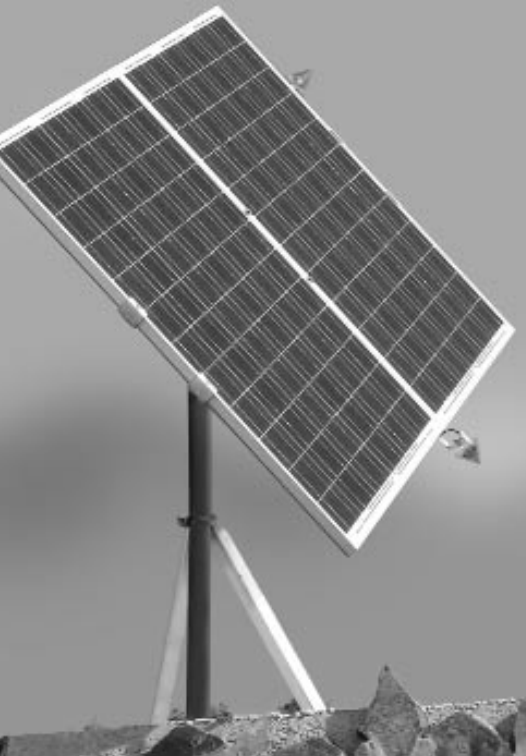
Available at any time:

From your solar equipment retailer.

More sun for the money



More sun for the money



DEGERtraker

art.no.:

300EL

28 11 310

1600EL

28 11 160

date 02/07

	300EL	1600EL
For solar yield	100 - 400 Wp	1.200... 2.200 Wp
Module area up to	3 m ²	16 m ²
Burden	55 kg	5.000kg
Rotation angle east-west	200°	360° with adjustable limit switches
Elevation inclination angle	15...90°	15...90°
Control unit	DEGERconector	
Energy converter	I or III	
east-west drive	drive integrated in the power head	
elevation drive	linear drive, 20 cm stroke path	850 mm stroke path
Power supply	<ul style="list-style-type: none"> - directly from the solar module or string - from a battery for stand-alone-systems - from the AC grid - or from an additional 1-5 Wp solar module for selfsufficient systems 	
Internal power consumption:	0,2 Watt	
control mode		
during drive operation	2 Watts	5 Watts
Power consumption per year	1 kWh	1,5...2 kWh
Mast length	mast not included, Ø 90mm	3,5...7,0 m
Weight (without mast)	30 kg	350 kg
Maintenance	maintenance-free	
Geographic regions	25th ... 90th degree of latitude	

Dual-axis, active tracking systems to suit most solar modules.

Scope of delivery:

Complete dual-axis tracking system, 1600EL with mast, aluminium solar module carrier system to fit the respective module type, DEGERconector control electronics with energy converter for extremely economical operation, foundation plan, construction plan.

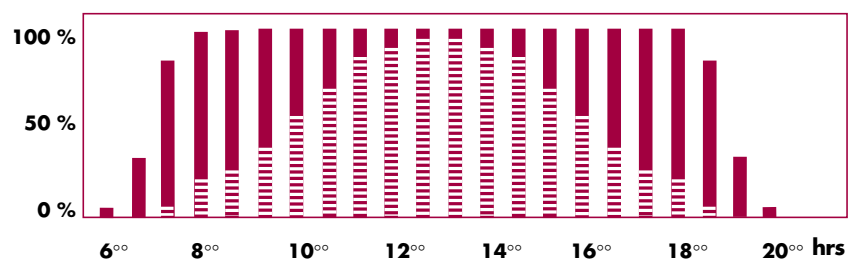


Functioning

The DEGERconector control unit detects the brightest spot in the sky and adjusts the module surface's position to face it. The DEGERtraker's mechanical system allows the accurate adjustment of the module surface to the sun all year round.

This technology also works in cloudy, rainy or foggy conditions. If, for instance, a day starts off sunny with clouds moving in from the west in the afternoon, the module surface will then move back slightly towards the east. On a completely overcast day, the module surface is adjusted to a horizontal position, or to face the point of the strongest irradiation. This allows to make the most out of adverse weather conditions.

Performance diagram at the example of a sunny summer's day fixedly installed DEGERtraker



No liability for printer's error.
Subject to technical changes for future improvements.

The difference lies in the technology.

Steinshalde 56 • 72296 Schopfloch-Oberfilzingen / Germany
eMail: info@DEGERenergie.com • www.DEGERenergie.com

