



DEGERtraker

5000NT

7000NT

date 02/07

Maximum solar yield...

can be achieved with the DEGERtraker tracking system. By using the DEGERtraker tracking system, you are truly acknowledging the signs of our times: not only are you protecting our environment and nature but you are increasing your yield and thus achieving amortisation sooner.

Maintenance-free. Long-lived. Recyclable.

The systems designed to these exacting parameters are mass-produced in an ISO 9001-certified factory under environmentally sound conditions. DEGERtraker systems are truly 100% recyclable. Compared with rigid systems, the amount of electronic scrap after useful life is 40% lower!

Quick installation.

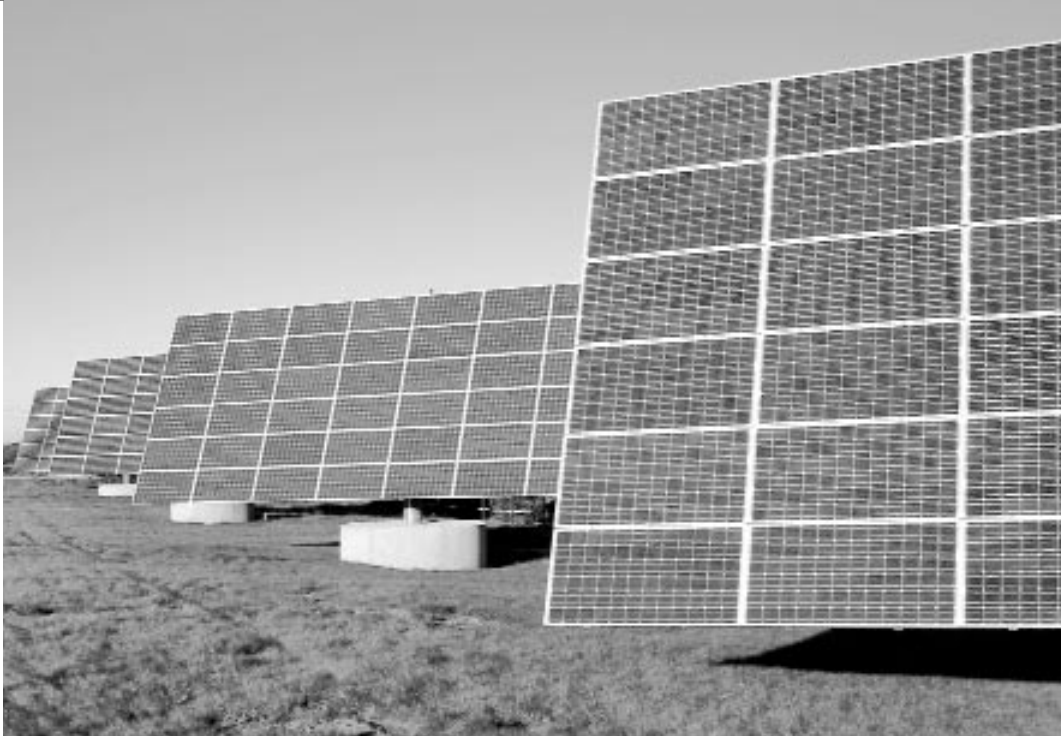
Pre-assembled components and detailed instructions allow installation within less than two hours (after the mast has been erected).

A technology to rely on.

The fact that the patent-protected control system and the utility model-protected mechanical system were awarded the inventor's prize of the federal state of Baden-Württemberg in 2000 and have since been further developed. This shows that the DEGERtraker meets the demands of both experts and investors. The proven static design of the DEGERtraker is based on DIN 1055-4 (8.86) and DIN 1056 (10.84) for installation up to 8m (wind load zone I).

Added yield 35-45%

Only possible with the patented system control DEGERconecter.



Tracking system for free-standing applications, on buildings and for fitting on different mast heights

More sun for the money

Efficiency...

...using the example of a 100 kWp system in a region where rigid systems yield around 950kWh / kWp per year.

Rigid system yield in 20 yrs:	1,900,000 kWh at 40 ct/kWh	=	760,000
DEGERtraker yield in 20 yrs:	2,660,000 kWh at 40 ct/kWh	=	1,064,000
			304,000
	Higher purchase price of DEGERtraker vs. rigid approx.		60,000
		End profit	244,000

... greater yield – double the return

Available any time:

From your solar equipment retailer.



More sun for the money



DEGERtraker

Art.No.:

5000NT

28 11 500

7000NT

28 11 700

date 02/07

	5000NT	7000NT
For solar energy capacity	4.000...6.000 Wp	6.000...9.000 Wp
Module area up to	40 m ²	60 m ²
Burden	10.000 kg	15.000 kg
Rotation angle east - west	360° with adjustable limit switches	
Elevation inclination angle	10...90°	
Control unit	DEGERconector	
Energy converter	II or V	
east - west drive	drive integrated in the power head	
elevation drive	1.000 mm stroke path	1.100 mm stroke path
Internal power consumption:	0,2 Watt	
control mode		
with operating drives	7 Watt	9 Watt
Power consumption per year	3...4 kWh	3,5...4,5 kWh
Mast height	3,3...5,5 m	3,3...5,5 m
Weight (excluding mast)	550 kg	1.090 kg
Maintenance	maintenance-free	
Geographic region	25°... 90° / optional equator to 90th degree of latitude	

Dual-axis, active tracking systems to suit most solar modules.

Scope of delivery



Complete dual-axis tracking system, mast, aluminium solar module carrier system to fit the respective module type, DEGERconector control electronics with energy converter for extremely economical operation, foundation plan, construction plan.

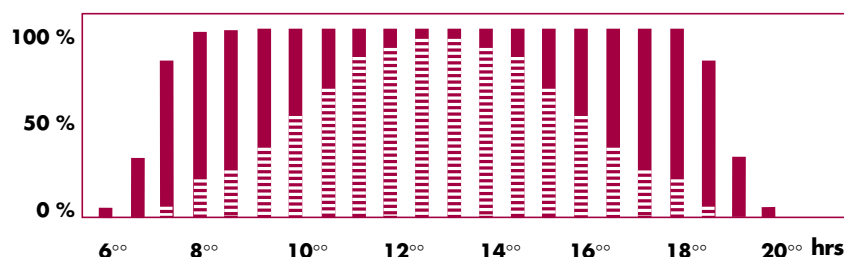


Functioning

The DEGERconector control unit detects the brightest spot in the sky and adjusts the module surface's position to face it. The DEGERtraker's mechanical system allows the accurate adjustment of the module surface to the sun all year round.

This technology also works in cloudy, rainy or foggy conditions. If, for instance, a day starts off sunny with clouds moving in from the west in the afternoon, the module surface will then move back slightly towards the east. On a completely overcast day, the module surface is adjusted to a horizontal position, or to face the point of the strongest irradiation. This allows to make the most out of adverse weather conditions.

Performance diagram at the example of a sunny summer's day  fixedly installed  DEGERtraker



No liability for printer's error.
Subject to technical changes for future improvements.

*The difference lies
in the technology.*

Steinshalde 56 • 72296 Schopfloch-Oberiflingen / Germany
eMail: info@DEGERenergie.com • www.DEGERenergie.com

